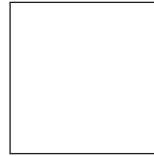


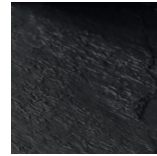
BESPOKE - Counter tops with a thickness of 12 mm



Finishes



White solid



Black slate



White marble

Packaging dimensions and weight

	600	700	800	900	1000	1200
Lenght (mm)	655	855	855	1055	1055	1255
Depth (mm)	495					
Height (mm)	40					
Net weight (kg)	6	7	8	8,9	10	12
Gross weight (kg)	6,5	7,5	8,5	9,6	10,6	12,7

Technical Characteristics

_Countertop manufacturing (12 mm):

Countertops machined to the size of the furniture models.

- White Solid Surface and white marble finish: Compound material of polyester resin with very fine uniform solids of natural mineral composition called ATH, aluminium trihydrate.

- Black slate: Compact material with monochrome core. Resistant to abrasion and moisture, with good functionality and appearance. They need no additional edging or any work on the surface finish.

Machining options

For countertop or semi-recessed basins



For one or two basins



With countertop or wall-mounted basins



Different corner finishes: standard, wall-mounted, with a towel rail or curved unit



Top basins for combination

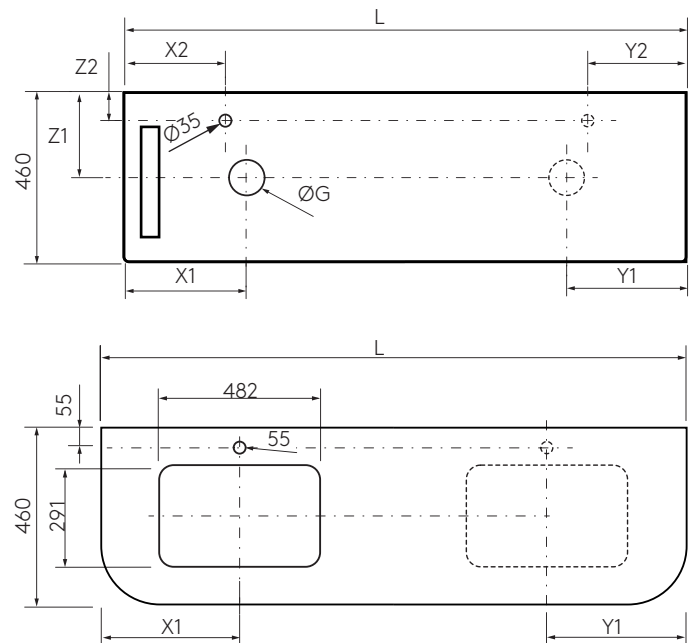
_Top basins:

Altiro, Seduction, Kandy, Lokum, Verila, Nesla, Bol, Bulkan, Bica, Talea.

_Semi inset basins

Mael

Dimensions



Order forms

Order forms necessary for custom countertops.

